



MICROEJ®

SWITCH TO SMART SOFTWARE

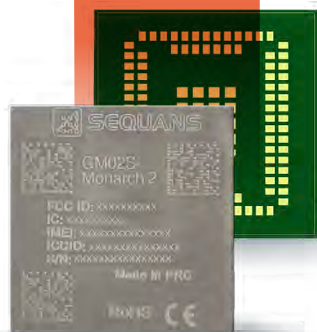
TRAILBLAZE ENERGY INNOVATION WITH MICROEJ'S SOFTWARE CONTAINERS ON SEQUANS' CELLULAR MODULES



Sequans Communications and MicroEJ announced a collaboration whereby the standard software Edge container, **MICROEJ VEE, has been ported to Sequans' Monarch 2 platform**, bringing significant benefits to manufacturers of energy meters and energy management systems.

Benefits include a fast go-to-production track, which reduces development time and cost, and easy porting non-cellular application types to cellular using Sequans' Monarch 2 technology.

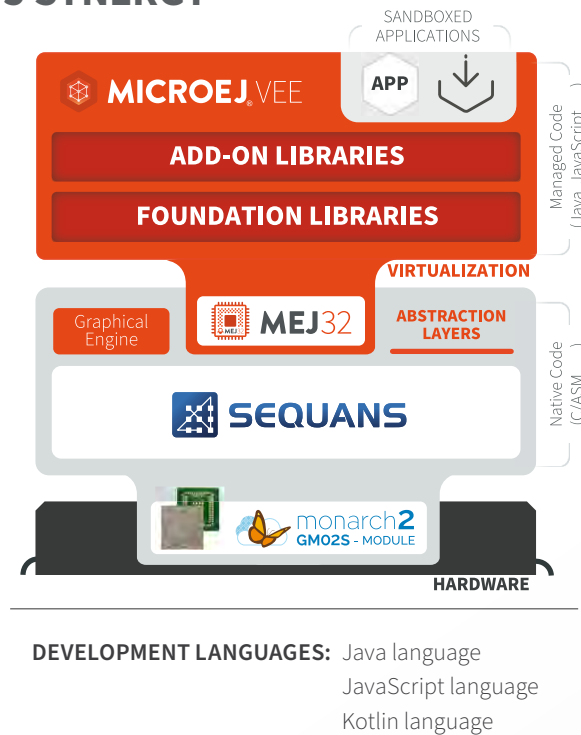
MicroEJ enables complex application development with higher-level languages and complete software/hardware abstraction and only requires widely available software expertise.



monarch2
GM02S - MODULE

MICROEJ / SEQUANS SYNERGY

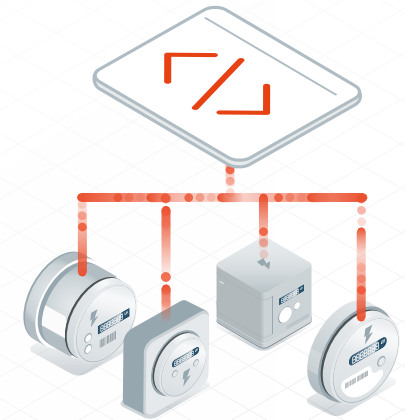
- Reusable software applications
- Fast marketing ideas testability
- Fast hardware innovation qualification
- Device-to-cloud holistic system
- Software development runs in parallel with hardware development
- Wide developer ecosystem, not limited to hard-to-find embedded expertise (over 35 million developers over the world are knowledgeable in MicroEJ's technology)



KEY ADVANTAGES

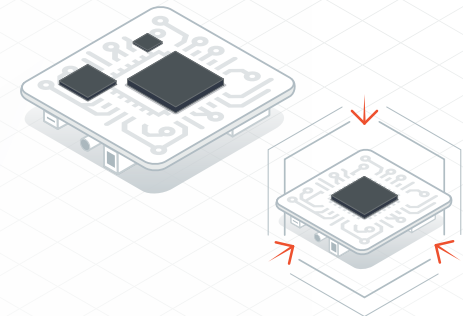
PORTABLE SOFTWARE

Designing several product variants with various Sequans modems or RF (Wifi, Lora, Cellular) is now possible with less effort, thanks to the hardware abstraction level.



COST OPTIMIZATION

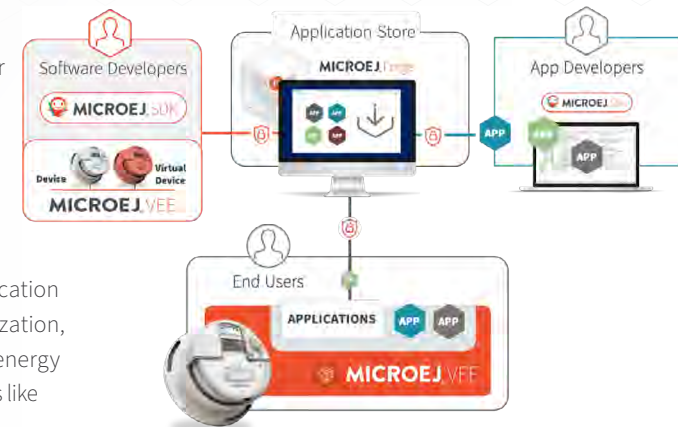
The complete application code can now be integrated into the Sequans modem, and there is no need for any additional processor. MicroEJ's software container maintains the strict separation between modem code and application.



CUSTOMIZATION AND APP ECOSYSTEM

Enable easy customization for each utility and empower your users and create an app ecosystem with MicroEJ's dynamic app loading and a custom application store.

Examples range from application services like utility customization, energy measurement and energy analytics to network services like provisioning, secure updates, and network analytics.



LEVERAGE MONARCH2'S ULTRA HIGH SECURITY AND EFFICIENCY

Monarch 2 GM02S is the world's only cellular IoT module with a certified Common Criteria EAL5+ secure enclave for integrated SIM (ieUICC) compliant with GSMA standards.

The module also supports a single rail power supply starting at 2.2 V, the lowest level in the industry, allowing for better efficiency of the internal power management unit, further reducing power consumption and lowering battery and BOM costs.



EXCITING THINGS



- ▶ www.microej.com
- ▶ developer.microej.com



- ▶ www.sequans.com